

# ARIO W 90-100-120-150

## 1. Description

The ARIO W is a wall-mounted extractor fan featuring timer and humidity sensor functions, fully controllable via the Plikc Smart app on your smartphone. Its antistatic finish protects against dust and dirt, while its selectable multicolored LED provides a useful reference point for your environment. The precise humidity sensor makes it suitable for various locations: basements, attics, cellars, windowless bathrooms, and other places where humidity and poor air circulation are issues. The ARIO W will activate the fan to expel excess humidity whenever it exceeds the user-set threshold via the smartphone. Alternatively, you can program a timer for a careful and constant air exchange tailored to the environment's needs where the ARIO W is installed.

## 2. Installazione

FIG.1

FIG.2

FIG.3



FIG.1 - Remove the grille from the motor housing.

FIG.2 - Fix the motor/fan unit to the wall using the provided screws at the exhaust hole. Make the electrical connection as indicated later.

FIG.3 - Reattach the grille to the motor housing.

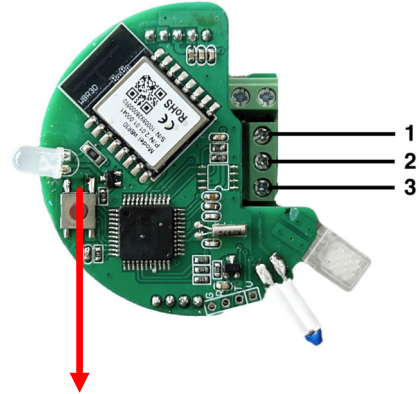
## 3. Technical Data

MOD.	HOLE	WATT	VOLT	m3/H	mm. H2O	PRESS. PA	db a 3mt.	PROTECTION GRADE
ARIO W 90	90	15	240	90	3	30	36	IPX4
ARIO W 100	100	15	240	100	4	39	36	IPX4
ARIO W 120	120	15	240	140	5	49	38	IPX4
ARIO W 150	150	15	240	160	5	49	38	IPX4

## 4. Electrical Connections

- **Connector 1:** Power input 230Vac - Phase
- **Connector 2:** Timer Trigger Input - from 230V switch (e.g., room light)
- **Connector 3:** Power input 230Vac - Neutral

Connect the 220/230V power supply to terminals 1 and 3 (if possible, connect the phase to terminal 1 and the neutral to terminal 3).



**\*\*APP ASSOCIATION BUTTON\*\* - PRESS AND HOLD (WITH A POINTED TOOL) UNTIL THE LED BEGINS TO FLASH RAPIDLY, THEN PROCEED WITH ACCOUNT CREATION AND ASSOCIATION AS DESCRIBED BELOW.**

## 5. Creating a Plikc Smart Account

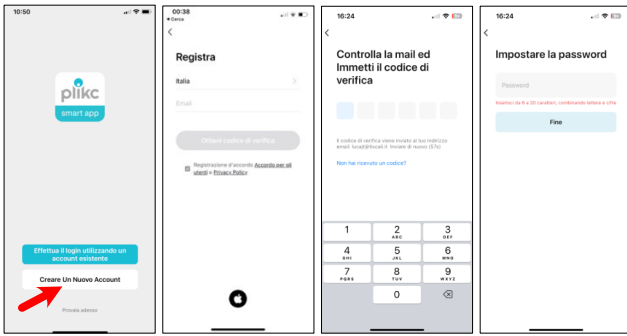
Scan the QR code on the extractor fan box and download the app for Android or iOS devices or type "plikc" in the app store search field.

Through the Plikc Smart application, you can fully manage the ARIO W and all other Plikc wifi devices.

Note: The association is via Bluetooth, so activate this function on your smartphone before proceeding. The extractor fan uses a Dual-Band Wifi chip, allowing it to be associated with both 2.4GHz and 5GHz Wifi networks.

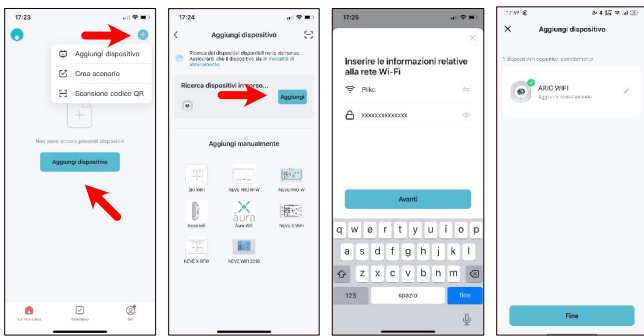
## 6. Account Registration

After downloading, open the Plihc Smart APP and proceed with creating a new account.



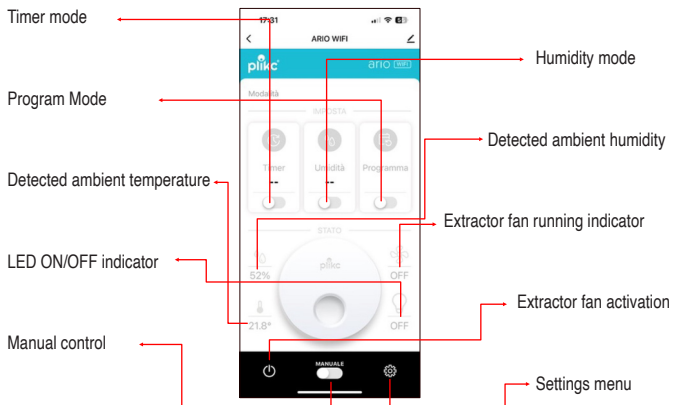
1. Press "Create a new Account."
2. Enter an email address, read the privacy policy, check the box to give consent, and press "Get verification code."
3. Enter the 6-digit code received by email within 60 seconds (also check the SPAM folder).
4. Set a password with at least 8 characters, including at least one letter and one number. Press "Finish"

## 7. Association Procedure



1. Press "Add device" or the "+" sign at the top right.
2. When the device icon appears on the display, press "Add."
3. Select the wifi network, enter the password, and press "Next."
4. Wait for the device to associate. When the "Finish" button lights up, press it.

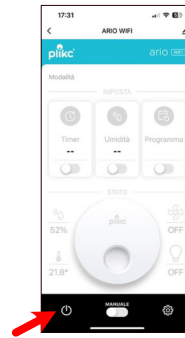
## 8. Pannello app



## 9. App Functions

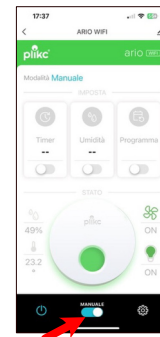
### Activation

Activate the device using the ON/OFF.



### Manual Function

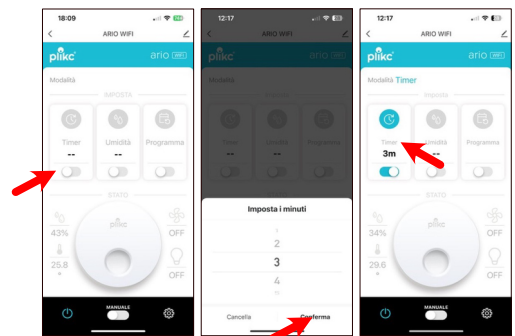
To turn the fan on and off without any automatic function, press the "MANUAL" switch.



### Timer mode

In Timer mode, the fan, appropriately connected to an external switch (e.g., room light), will activate as soon as the switch is turned on (e.g., room light on). Once the switch is turned off, the fan will remain on for the time set in the app before turning off automatically.

- Turn on the switch related to this intervention mode
- Set the delay time and press confirm
- The app will indicate the set delay time and the active function

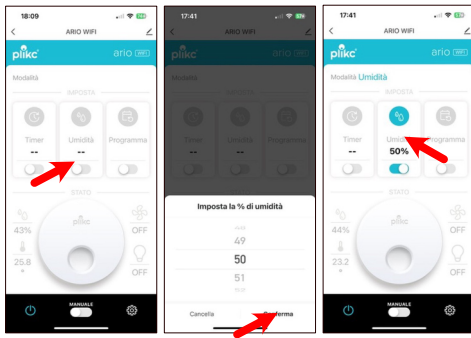


## Humidity Mode

In Humidity mode, when the internal humidity sensor detects a relative humidity rate higher than the set value, it will activate the fan until the parameter returns within the set threshold.

- Turn on the switch related to this intervention mode
- Set the desired humidity percentage and press confirm
- The app will indicate the set percentage and the active function

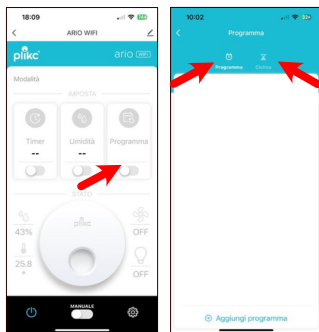
**Note:** The device leaves the factory with a 2% RH differential. This means that if a humidity percentage of 50% is set, the fan will start when the device detects an RH of 52% and will stop at an RH of 48%. This function helps prevent continuous and inefficient fan switching. To change this parameter, read the "Settings Menu" section.



## Program Mode

In Program mode, you can set a series of daily/weekly interventions by the fan at specific times for both on and off operations. Additionally, you can create pause/work cycles within a specified time frame for the days of the week you need.

- Turn on the switch related to this intervention mode
- Choose Program or Cyclic
- Proceed as indicated on the next page

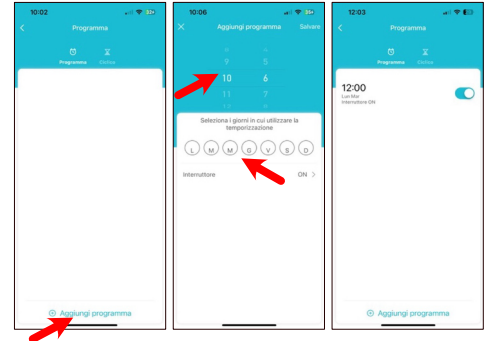


## Program Mode

### Setting Daily/Weekly Program

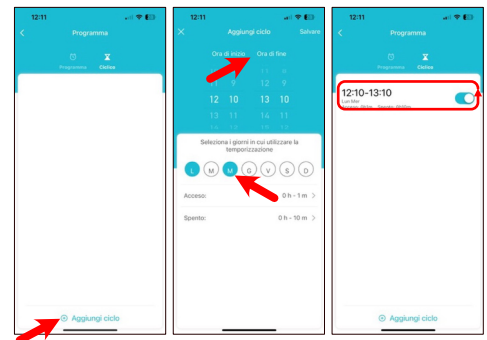
- Press "Add program"
- Set the time and day(s) of the week
- Press "Switch," select ON, and press "Save" at the top right
- Press "Add program" again to create the OFF time

**Note:** A program consists of both an ON and an OFF.



### Setting Cyclic

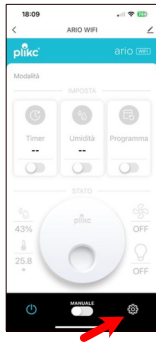
- Press "Add cycle"
- Select the start and end cycle times
- Select the on and off times
- Press "Save" at the top right
- In the example shown, the fan will turn on for 1 minute and remain off for 10 minutes cyclically from 12:10 to 13:10 on Monday and Wednesday



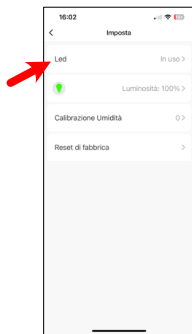
## Settings Menu

Customize the fan's operation via the settings menu.

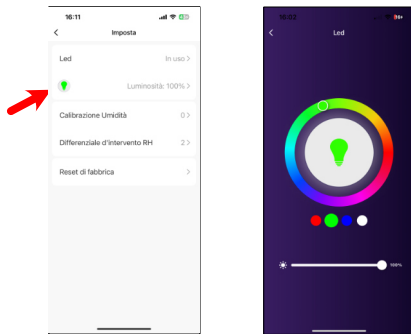
- Press the indicated button



- By pressing "LED," you can decide if the fan's LED should always be on "ON," always off "OFF," or only when the fan is running "In use"



- By pressing the "Lamp" symbol, you can change the LED color and brightness



- By pressing "Humidity Calibration," you can adjust the detected ambient humidity percentage in 1% steps.
- By pressing "RH Differential," you can set the fan's RH differential from 1 to 5% (see Humidity Mode section).
- By pressing "Factory reset," the fan is reset to factory values.

## 10. Associating with Alexa or Google Assistant

Scan the QR code and follow the instructions to connect your ARIO WIFI to Alexa or Google Assistant.



## 11. General Warnings

- Carefully read the instructions before use.
- The device installation must be carried out only by qualified personnel.
- Before accessing the terminals, ensure the conductors to be connected to the device are not live.
- Before performing any cleaning or maintenance, disconnect the device from the power supply by turning off the system switch.
- Do not install in environments where corrosive gases may be present and/or where rain may reach.
- Do not power or connect the device if any part is damaged or compromised.

The device must discharge into a single exhaust duct. If discharging directly outside, a protective grille must be installed. Ensure adequate air return in the room where the fan is installed. Disconnecting the device from the power supply must be ensured by a switch with a contact opening distance that allows complete disconnection under category III overvoltage conditions and in accordance with installation rules. The device is "class" II (double insulation) and does not require grounding. It can be installed either on the wall or ceiling; technical data are on the label attached to the fan. The fan is CE marked and complies with European Directives: CE2006/95; CE2004/108. Maximum ambient temperature is 40°C.

**\*\*CLEANING THE FANS\*\*:** Disconnect the power, remove the grille from the motor compartment, clean the fan with a brush, taking care not to wet the motor, and reattach the grille to the motor compartment.

The device is not intended for use by persons (including children) with reduced physical, sensory, or mental capabilities, or lack of experience or knowledge, unless they have been given supervision or instruction concerning use of the device by a person responsible for their safety. Children should be supervised to ensure they do not play with the appliance.

## 12. DISMANTLING AND RECYCLING USER INFORMATION

Pursuant to Article 13 of Legislative Decree 25 July 2005, No. 151 "Implementation of Directives 2002/95/EC, 2002/96/EC, and 2003/108/EC on the reduction of the use of hazardous substances in electrical and electronic equipment, as well as the disposal of waste," the symbol of the crossed-out wheellie bin displayed on the equipment or its packaging indicates that the product must be collected separately from other waste at the end of its useful life.

Therefore, the user must deliver the equipment that has reached the end of its life to appropriate separate collection centers for electronic and electrical waste, or return it to the retailer upon purchasing new equipment of an equivalent type, on a one-to-one basis. Proper separate collection for subsequent recycling, treatment, and environmentally compatible disposal of the discarded equipment helps to prevent potential negative effects on the environment and health and promotes the reuse and/or recycling of the materials comprising the equipment. Unauthorized disposal of the product by the user entails the application of administrative sanctions provided by current regulations.

For other languages of the manual, send an email to:

**FOR OTHER LANGUAGES MANUAL SEND AN EMAIL TO:  
INFO@PLIKC.COM**



Il simbolo del cestino barrato riportato sull'apparecchio indica che il prodotto, alla fine della propria vita utile, dovendo essere trattato separatamente dai rifiuti domestici, deve essere conferito in un centro di raccolta differenziata per apparecchiature elettriche ed elettroniche, oppure riconsegnato al venditore al momento dell'acquisto di una nuova apparecchiatura equivalente. L'utente è responsabile del conferimento dell'apparecchio a fine vita alle appropriate strutture di raccolta. L'adeguata raccolta differenziata per l'avvio successivo dell'apparecchio dimesso al riciclaggio, al trattamento e allo smaltimento ambientale compatibile contribuisce ad evitare possibili effetti negativi sull'ambiente e sulla salute; e favorisce il riciclo dei materiali di cui è composto il prodotto. Per informazioni più dettagliate inerenti i sistemi di raccolta disponibili, rivolgersi al locale servizio di smaltimento rifiuti. Lo smaltimento abusivo del prodotto da parte dell'utente comporta l'applicazione delle sanzioni amministrative di cui al D.Lgs. n.22/1997 art.50 e seg. dello stesso D.Lgs.

